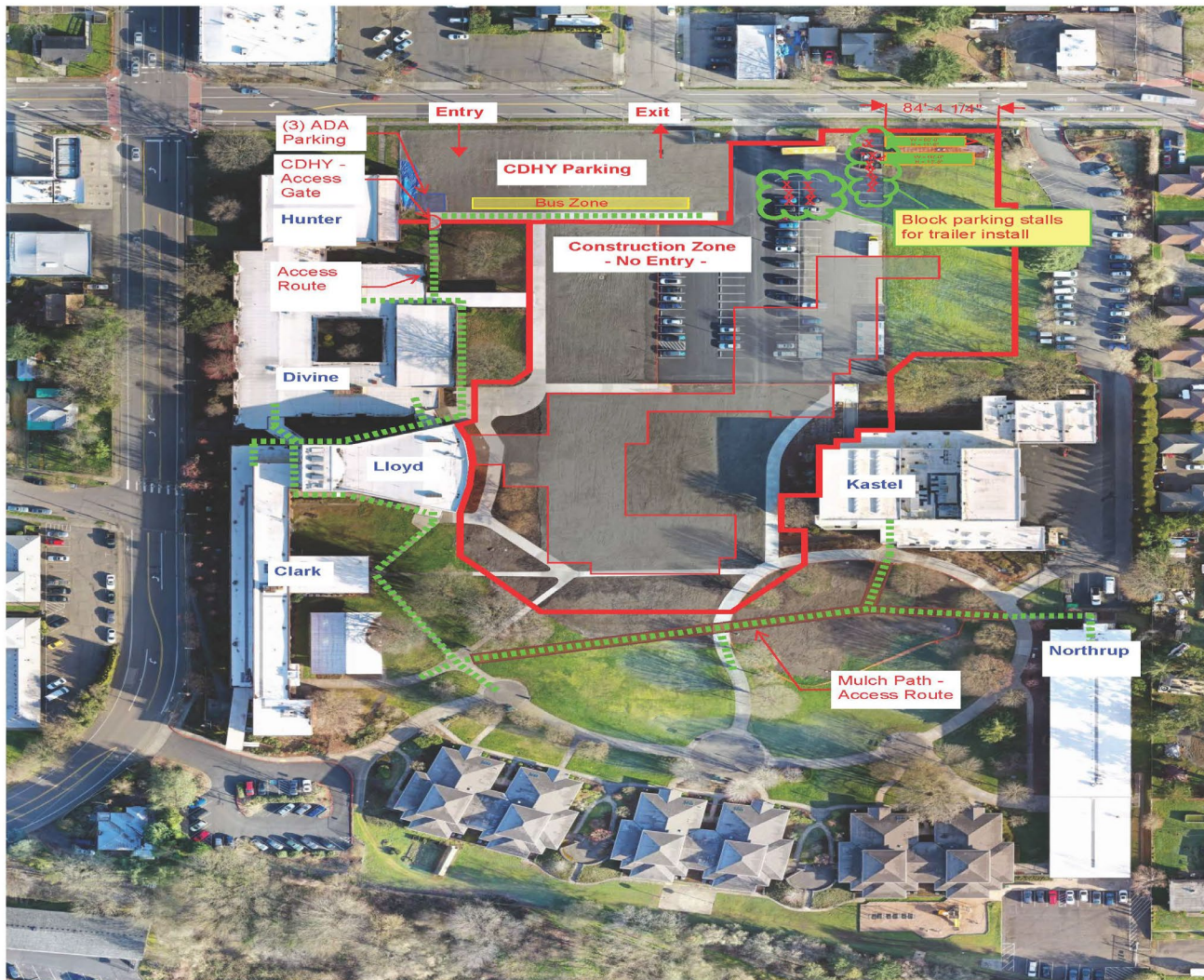


May 12, 2023

Dear Parents and Guardians,

We will soon begin construction on our new academic building and gym! **Your child's safety continues to be our highest priority.** This letter has a lot of important information about how we are going to keep everyone safe. There are changes to drop off/pick up locations and walking paths on campus. Please read this carefully.

Below is a map of what our campus will look like beginning June 2nd. Note that most of the campus center will be blocked off (red outline).



Important Dates to note:

- May 22: Construction fencing arrives and sections of the fencing will go up around campus. Campus will remain accessible.
- June 1st: Groundbreaking ceremony at 1:00 pm. All parents are invited! Please RSVP to Kelly Moore at: Kelly.moore@cdhy.wa.gov
- June 2: Last of construction fencing goes up—center of campus becomes inaccessible. Use alternate access routes noted below. There will be signage.
- June 5: Construction crews will remove contaminated soil (from Old Boiler House site), and then.....**BEGIN!!**



How does this affect you?

- Parking will be limited; note the gravel lot on the north end of campus will have an entrance and an exit, for easier turnaround.
- There is parking in the Northrop parking lot, Clarke Hall parking lot, the gravel lot and the state car lot.
- **Local secondary students will be dropped off/picked up at Divine from the gravel lot off of Evergreen Blvd.** Students will report to the gym when they are dropped off in the mornings and eat sack breakfasts there.
- **Local elementary students will be dropped off/picked up at Northrop parking lot.** Students will eat breakfast in the cafeteria as usual.
- All residential students will eat breakfast, lunch and dinner in the cafeteria as usual.
- All local students will eat lunch in the cafeteria.
- **NOTE: the north and west doors of Kastel Cafeteria will be inaccessible; only the south door will be accessible.** Parents will no longer be able to access Kastel from the north parking lot. See above regarding pick up/drop off locations.
- *Aides will meet students at drop off locations and escort students from parking lots to buildings as necessary—more details to come. Contact your building principal if you have questions.*

Exciting times! Thank you for your patience as embark on this journey. It will be a long 15 months, but it will be worth it.

Reminder: you can bookmark the WSD construction website for camera footage/updates (it is also linked on our homepage)

<http://view.ceros.com/skanska/cdhy/p/1>

Please let me know if you have questions.

Thank you,

Shauna Bilyeu

Interim Executive Director

CDHY: Washington School for the Deaf

VP: 360-334-5448

Shauna.bilyeu@cdhy.wa.gov