



# APPLIED BLA

YEAR 2023-2024

## COURSE DESCRIPTION:

Applied Bilingual Language Arts (BLA) course is to teach students to develop reading and writing skills in two languages: American Sign Language and English. Bilingual educational strategies in American Sign Language (ASL) and English are used in order to ensure an in-depth understanding of the materials. In this class, the students will develop tools and strategies when reading informational texts in the real world. Reading, vocabulary, grammar, and writing in ASL and English are the four main components of this class. All materials are realistic, applicable, and relevant to the real world and workplace. Problem-solving skills, learning strategies, and communication writing skills are also taught in this class as well to better prepare students for their future.

### Units:

- Reading maps
- Riding a bus
- Current events
- Nutrition
- Natural Disasters
- Emergency Prep & Safety
- Self-Care
- HS & Beyond Plan
- And more!



## GRADING:

Quarterly grades will be determined as follows:

- **Class Assignments: 70%**
- **Tests: 30%**

## CONTACT INFORMATION

Michelle Clark

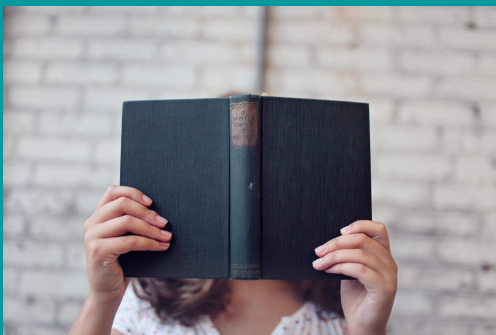
michelle.clark@cdhl.wa.gov  
(360) 553-4623

## MATERIALS NEEDED:

- Pens (any color)
- Pencils
- Highlighters (optional)
- One-subject notebook, college ruled
- ChromeBook (WSD will provide)
- Great attitude and motivation!

## CURRICULUM MATERIALS:

- Oxford Picture Dictionary
- English for Everyone
- Teen Emergent Reader Libraries
- IXL - Language Arts
- BGC - Bilingual Grammar Curriculum



"There is no magic to achievement. It's really about hard work, choices, and persistence." -Michelle Obama



# Welcome Back!